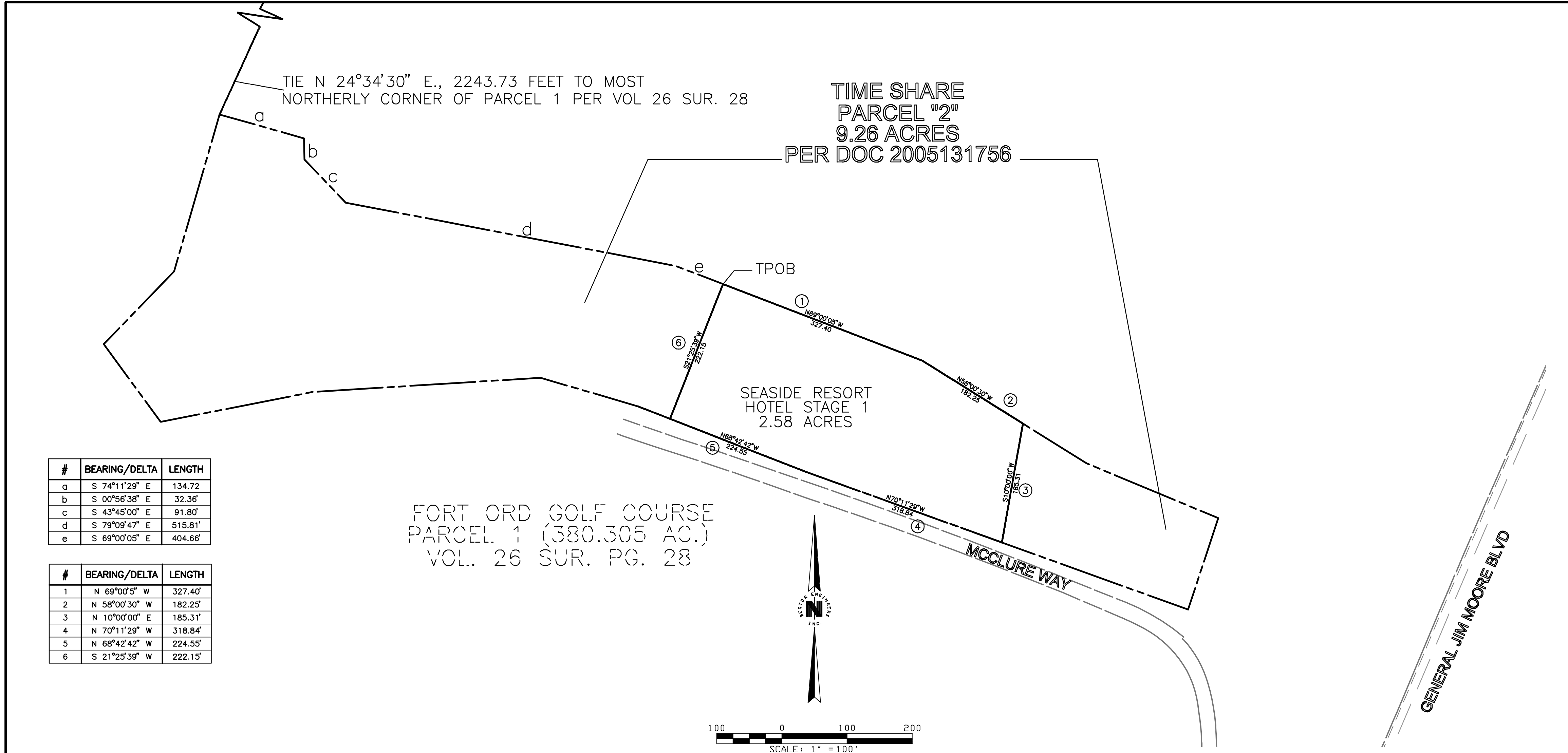
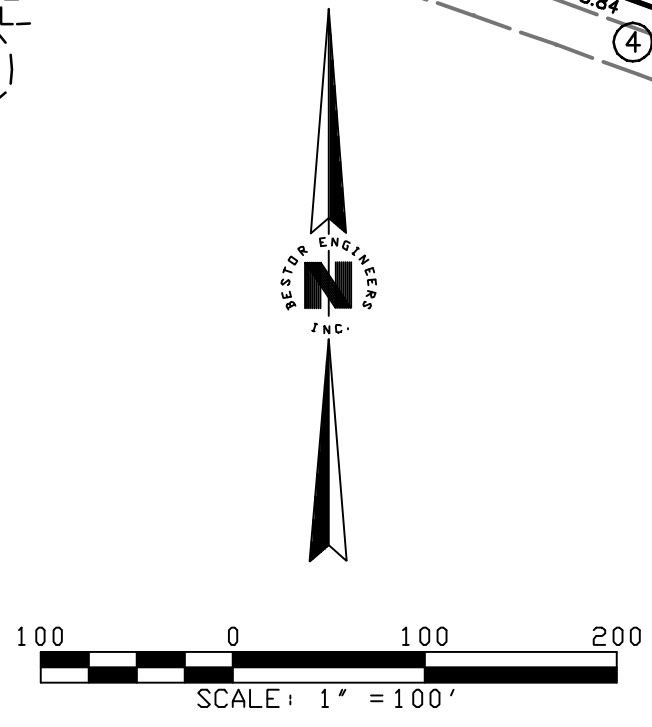


L:\5991\599117\Drawings\Plans\599117-FM-03.DWG - wards - SEPT 21, 2017 - 15:15:32



#	BEARING/DELTA	LENGTH
a	S 74°11'29" E	134.72
b	S 00°56'38" E	32.36'
c	S 43°45'00" E	91.80'
d	S 79°09'47" E	515.81'
e	S 69°00'05" E	404.66'

#	BEARING/DELTA	LENGTH
1	N 69°00'5" W	327.40'
2	N 58°00'30" W	182.25'
3	N 10°00'00" E	185.31'
4	N 70°11'29" W	318.84'
5	N 68°42'42" W	224.55'
6	S 21°25'39" W	222.15'



- LEGEND**
- FOUND 1-1/2" IRON PIPE WITH BRASS DISK STAMPED RCE 15310 UNLESS OTHERWISE NOTED
  - SET 3/4" IRON PIPE TAGGED RCE 29811
  - COURSE ① TO ⑥ BOUNDARY OF TIMESHARE PARCEL 2

TRACT No. \_\_\_\_\_

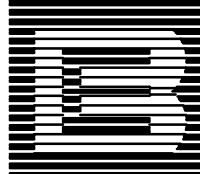
**SEASIDE RESORT HOTEL  
STAGE 1 SUBDIVISION**

BEING A PORTION OF PARCEL 1 (380.305 AC.)  
VOLUME 26 OF SURVEYS, PAGE 28

SITUATED IN  
THE CITY OF SEASIDE  
MONTEREY COUNTY, CALIFORNIA

PREPARED FOR  
SEASIDE RESORT DEVELOPMENT, LLC

BY



**BESTOR ENGINEERS, INC.**  
CIVIL ENGINEERING - SURVEYING - LAND PLANNING  
9701 BLUE LARKSPUR LANE, MONTEREY, CALIFORNIA 93940  
SCALE: AS SHOWN DATE: SEPTEMBER 20, 2017 W.O: 5991.17